

NB. EOL RESISTOR MUST BE ADDED AS REQUIRED BY ALARM PANEL



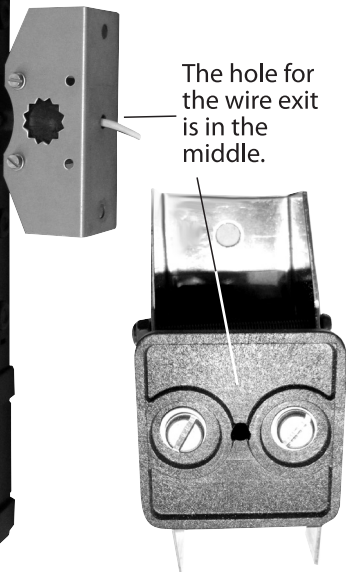
Walk Test

20 minutes from power up

Installation

The HW22 has a single ball-joint mounting bracket with 5 possible bracket mounting locations on the back of the spine.

Once you have chosen the position of the mounting bracket, drill the holes out (5.5mm) and drill a hole for the connecting wire to exit the guard.



Survey the area you wish the beams to cover. If the ground is relatively flat, install the bracket in the middle mounting location. If the unit is to be angled upward, choose a higher mounting location, and if the unit is to be angled downward, choose a lower mounting location.



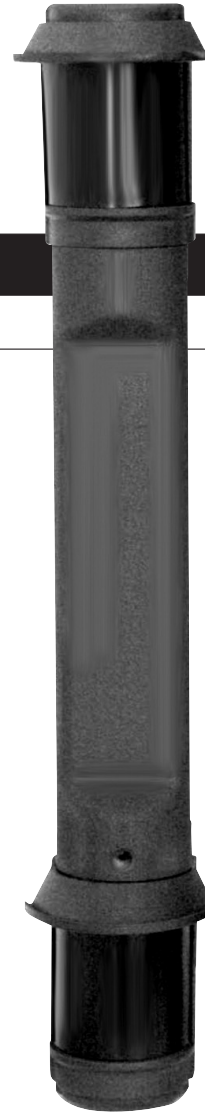
ASKARI

HW22

OPERATORS MANUAL

Product Features

- Dual, fixed beam PIR's (Passive InfraRed)
- Audible walk-test mode
- Detection range adjustable from 5 meters to over 18 meters
- Optional Double Hit mode setting
- Optional Trigger sensitivity setting
- Weather proof (10 year UV warranty)
- Unbeatable false alarm immunity
- 12-16VDC Power Source at 3.5mA
- Small and unobtrusive
430mm x 50mm x 950mm



Askari HW22
Outdoor Dual PIR Motion Detector

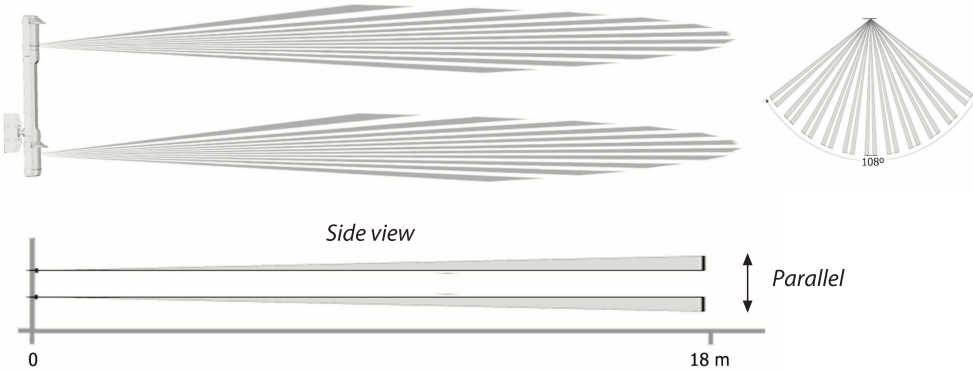
ISO 9000-2000 Approved



www.askaribeams.co.za

Beam Patterns

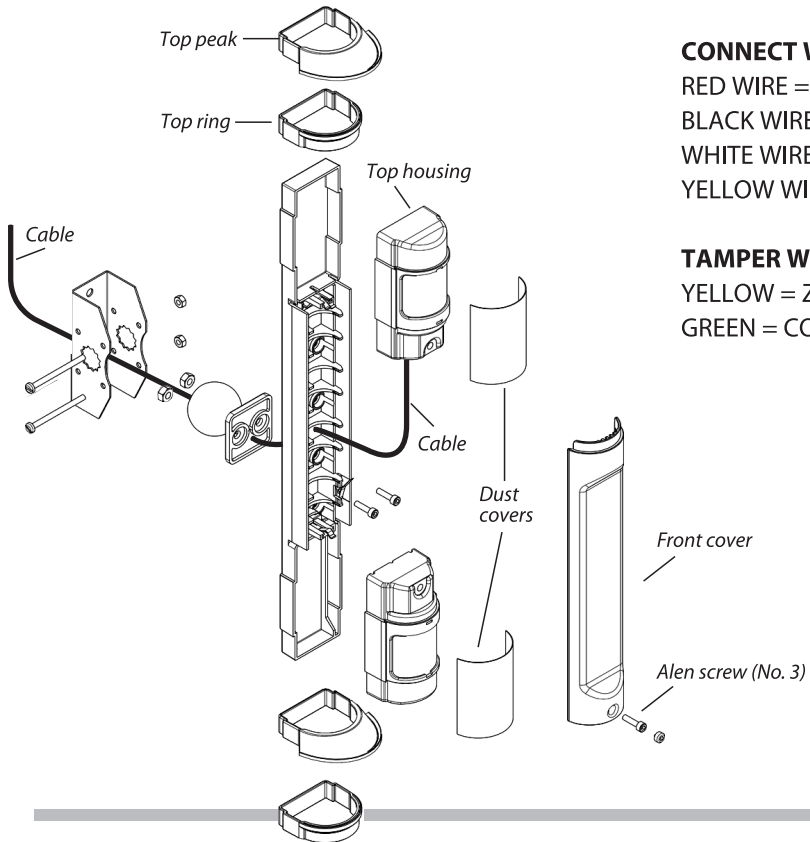
Mounting height
0.8 to 1.2 m



Connections

POWER		ALARM	
+12 V	GND/com	NC	NO

Remove the front cover from the HW22 using an Allen Key (No. 3).



CONNECT WIRES

RED WIRE = AUX +
BLACK WIRE = AUX -
WHITE WIRE = COM
YELLOW WIRE = ZONE

TAMPER WIRES (N/C)

YELLOW = ZONE
GREEN = COM

Detection Range

The top eye has 4 options for detection range. These are set on the detection range DIP switch. (Default = 75%)

The bottom eye has this Detection range DIP switch as well.

Most range

100%
on

X	X
1	2

50%
on

X	
	X
1	2

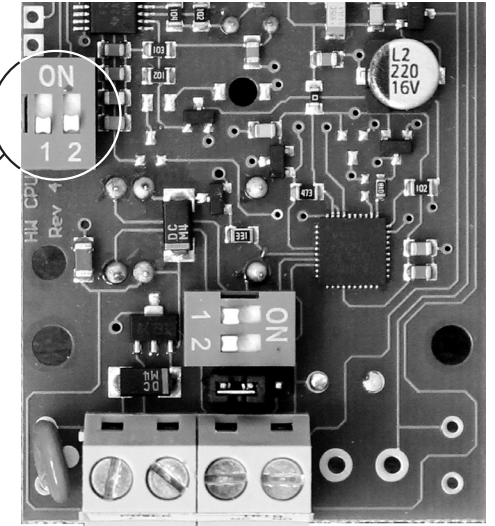
75%
on

	X
X	
1	2

25%
on

X	X
1	2

Detection Range DIP Switch



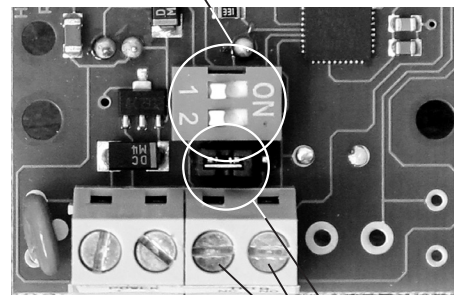
Operating Mode

Operating mode selection:

The top eye has 4 options for detection mode.

These are set on the operating mode DIP switch. (Short time 1 hit = default)

Operating mode DIP Switch



Trig 1 and Trig 2 can be set up to be N/O or N/C via the jumper.

Jumper
Alarm wires

Long time
1 Hit

X	
X	
1	2

on

Short time
1 Hit

	X
X	
1	2

on

Long time
2 Hits

X	
	X
1	2

on

Short time
2 Hits

	X
	X
1	2

on



ASKARI